

Prom Coast Festival

WEEKEND | MARCH 15-17 2019

promcoastfestival.org

2019 Program

Your Festival Guide



Proudly supported by the customers
of Toora & District Community
Bank® Branch & Foster branch

 **Bendigo Bank**



FOSTER • FISH CREEK • WELSHPOOL • TOORA • SANDY POINT • MOUNT BEST

Welcome

Welcome to the Prom Coast Festival. This 7th iteration of the biennial Festival that began in 2007 consists again of events organised by community groups showcasing the regions artists, creators, performers and produce growers.

We're pleased that this year the Festival involves the Town Halls of Welshpool, Toora, Mount Best, Foster, Sandy Point and Fish Creek. The events at these venues include rock & roll, chasing history, guitar music, melodic singers, a picnic and fun for children.

These are only some of the events in those towns designed to entertain you. As you wander through this booklet there will be decisions to make about what to see and when, and what not to miss! We make no apologies that the program is packed with music, food, books, games and lots of fun!

Prom Coast Festival Committee

Official Opening of the Prom Coast Festival

Please join us on Friday evening for the official opening of the Prom Coast Festival. The Honourable Jane Garrett MP, Member for Eastern Victoria and Parliamentary Secretary for Jobs will perform our Official Opening.

o Friday: 6:00pm, Foster Hall

Explore our Galleries

Alison Lester Gallery: 1 Falls Rd, Fish Creek

Celia Rosser Gallery: 1791 Meeniyah-Prom Rd, Fish Creek

Fish Creek Hotel ArtSpaces: Old Waratah Rd, Fish Creek

Foster Museum: Main St, Foster

Gecko Studio Gallery: 17 Falls Rd, Fish Creek

PeoplePlacesThings: 11 Falls Rd, Fish Creek

Ride the Wild Goat Gallery: 5 Falls Rd, Fish Creek

Sandy Point Gallery, 33 Beach Pde, Sandy Point

Stefani Hilltop Gallery, Keanes Rd, Fish Creek

Stockyard Gallery. 1 Main St, Foster

Toora Village Studio Gallery, 25 Stanley St, Toora

YEP Gallery, 39/41 Main St, Foster

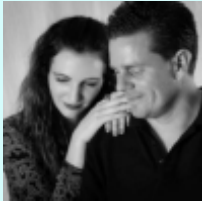


Picnic in the Park

Saturday 11:00am – 3:00pm

Music, food and entertainment in PJ Wilson Reserve, Foster

11:00 -Welcome to Country and Picnic Opening



11:30am Souly Us

Ben & Kate are currently taking their unique, soulful sound to audiences right across South Gippsland and are willing to go wherever their music takes them. This amazing, self-taught young duo radiates chemistry and connection. With Kate's warm angelic voice and Ben's rhythmic and passionate artistry on guitar they form a poetic soulful sound.

o Saturday: 11:30am, Picnic in the Park, PJ Wilson Reserve, Foster and 4:00pm, Rhythm Café, Bridge Street, Foster

12:15pm Lisa Pellin Dancers

This will be an energetic and exciting dance display from the Lisa Pellin Dancers Senior class. LPD has been busy developing classical, Tap, hip hop and Jazz dancers in Foster for over 21 years. Today the girls will perform some of their own choreography as well as some new dances they are preparing for the upcoming competitions in Yarram and Leongatha this year.



12:20pm Brody Young



Brody's instrumental guitar style was first recorded in 'Dream A Little' at 18. Passionately independent, Young's music is rich with vocal and tonal influences from his travels through 22 countries on 6 continents; and revels in a strong percussive and rhythmical guitar style that will mesmerise. After some family time away from the festival scene, Brody returns to live performances with two 'Young' musicians in tow. See www.brodyyoung.com for all of the links.

1:10pm Great Southern Ukes

Members of local group Great Southern Ukes are as diverse and eclectic as their musical tastes. They started as a small group of enthusiasts helping each other to learn to play ukulele and four years on have a comprehensive song list which includes bouncy old timey tunes with a mix of Bluegrass, Jug and Jazz. With the odd guitar, washboard and harmonica thrown in you're bound to find something to smile about and tap your toes to!



1:30pm Loophole Savage



Harmonica like you've never heard. Loophole Savage uses up to six harmonicas in a single song to blast out everything from ACDC and Jet to Paul Kelly and Aretha Franklin ... and a whole lot more in between. Using only the bare elements of vocal percussion, evocative blues harmonica and song, each cover and original builds into a multi-layered audio tapestry.



2:00pm Mate's Rates

Mate's Rates are an energetic four piece band from Wonthaggi. Covering rock and blues with their own originals thrown in too! It's sure to get you up and jumping.

Children's Literature Day at Fish Creek

Sunday 10:00am – 4:00pm

Rail Trail Story Time – for Bikes or Walking. While riding or walking along the trail be delighted by story tellers Tim Farrell or Marg Haycroft who can spin some good railway & train yarns. 10:00 – 11:00am, Meet at Fish Creek Railway Station. Free.

Gallery for a Day Join Amanda Cooper for a selection of activities, to 'Be an Art Detective'. You will explore the art of picture book making & also become an 'Art Detective' as you wander through the gallery of books & original art works. 10:00 – 4:00pm, Fish Creek Hub

Great Paper Plane Fly-off Design & make your own paper plane to join the Great Paper Plane Fly-off. 11:15 – 12:15pm, Fish Creek Town Tennis Courts

All Day
Galleries
Cafes
Book Fair
Reading Tree
Coast Care
Van

Festival Marquees

Entry by gold coin donation

Make a Windchime 11:00 – 3:00pm

Author- Illustrator Talks & Presentations

Meet with & listen to Roland Harvey & others. 11:30 - 12:30pm



Scully's Musical Stories

Michelle Scully will launch her musical renditions of popular children's stories written by our own Alison Lester. A wonderful interactive musical program for all the family. 12:15 – 1:15pm

Fantasy & Science Fiction for teenage & young adult readers

Join local authors Liz Farrell & Janeen Webb for an interactive workshop exploring the worlds of fantasy & science fiction. 1:00 – 2:00pm

Information Sessions: Mandy Cooper – being a Children's Book Council Award Judge
Deb Bray – How to read to littlies. Why story telling & reading with babies & young children is important to their development in so many ways. 2:00 – 3:00pm

Author – Illustrator Talks & Presentations .

Alison Lester & others: 3:00 – 4:00pm



Check out the high quality local crafts at the Fish Creek Makers' Market in the Fish Creek Hall.



Prom Coast Community Bake-Off

Indulge your inner cake maker by entering the inaugural Prom Country Community Bake-Off. "Categories for 'cakes', 'biscuits & slices', 'children's baking' and 'savoury and yeast cooking' Entering the competition is free, but admission to watch and sample is \$5.00 per person. Supper room, Fish Creek Hall



The Endless See - Frank Veldze Light Projections

A fresh-eyed gathering of imagery and ideas from the region, some of which revolve around the journey to, the history of, and events within and our relationship with the greater universe. Beginning at dusk – late.

- o Wednesday, Thursday and Friday evenings at Fish Creek Pub; and Saturday evening at Pearl Park, Foster



Escape from Trash Mountain



A puppet show with sustainability at its heart. Escape from Trash Mountain is a poignant look at how good relationships and fervent optimism are the key to saving the planet. An event for Primary School students.

- o Thursday: 11:00am-12:30pm, Foster Hall

Exhibition Opening

Potoroos, Bandicoots and Quolls

- o Saturday: 2pm, YEP Gallery, 39/41 Main St, Foster



Fifty Cent Challenge

Bring your spare 50c pieces to the Picnic, and we'll see how many we can collect for the South Gippsland Hospital. Start saving them now!

- o Saturday from 11am, Picnic in the Park, PJ Wilson Reserve, Foster

Foster Craft Market

A collection of makers accompanying the Farmers Market. You will find a wonderful selection of locally-made products in Anastasia Lane.

- o Saturday: 8:00 – 12:00pm, Anastasia Lane, Foster

Foster Arts, Music & Drama Association (FAMDA) present The Vicar of Dibley

The beloved British sitcom, The Vicar of Dibley, originally ran on BBC TV between 1994 and 1998. Set in a fictional village of Oxfordshire, the series told the tale of a female vicar assigned to a rural parish. The quirky village characters have become much loved, prompting FAMDA's decision to stage this iconic comedy. Bookings required: www.famda.org.

- o Friday: 8:00 – 10:00pm, Foster Hall



Foster

Escape From Trash Mountain – Performance Thursday 11:00 – 12:00pm

Friday

10:30-
11:30am

Children's Story time with Marg Haycroft
10:30 – 11:30 am

3:00pm

Between the Covers – Adult Book Discussion

4:00pm

3:30 – 4:30 pm

OFFICIAL OPENING of the Prom Coast Festival

6:00pm

6:00 – 7:00 pm

7:00pm

Performance at Rhythm Café 7:00 – late

8:00pm

Vicar of Dibley – Theatre Show

9:00pm

8:00 – 10:30pm

Saturday

8:00am

Prom Country Farmers Market

9:00am

8:00 – 12:00 pm

10:00am

Foster Craft Market

11:00am

8:00 – 12:00 pm

12:00pm

Picnic in the Park

Music, food and entertainment in PJ Wilson Reserve

1:00pm

11:00 -Welcome to Country and Opening

11:30 - Souly Us

12:15 - Lisa Pellin Dancers

12:30 - Brody Young

1:10 – Great Southern Ukes

1:30 - Loophole

2:00 – Mate's Rates

2:00pm

"50 cent Challenge"

Historical Talk

1:30 – 3:00pm

**Exhibition
Opening – YEP
Gallery 2pm**

3:00pm

The Big Book Club

Book Discussion 3:00- 4:30 pm

4:00pm

Souly Us

4.00 – 8:00pm

7:00pm

**Lady of the
Swamp: A musical
narration**

7:00 – 9:00pm

8:00pm

**Melbourne
Ska Orchestra**

Doors open at 7:00 – late

Wiggy's
Degustation
6.00 - 8.00pm

**The Endless
See - Light
Projection
Dusk - late**

Sunday

Prom Coast Children's Literature Festival

9:00am

10:00am

11:00am

12:00pm

**'Getting Dressed with Jane' –
Performance 1:00 – 2:00 pm**

1:00pm

**Fish Creek Festival Marquees
Author- Illustrator Presentations**

11:30 – 12:30pm and 3:00 – 4:00pm

Scully's Musical Stories 1:00 – 2:00pm

Fantasy & Science Fiction 1:00 – 2:00pm

5:00pm

Jennifer Timmins & Thea Rossen- Concert 5:00pm – 7:00pm

8:00pm

Fish Creek

Mount Best - Sandy Point - Toora -
Welshpool, Port Welshpool, Tidal River.

The Endless See - Light Projection by Frank Veldze Wednesday, Thursday and Friday Evenings
at Fish Creek Dusk - late

ay 15th



The Endless See: Light Projection

Spectrum - Performance

7:30pm 

ay 16th

Family History Morning
Tea


10:00 - 2:00 pm

Gurney's


10:00 - 11:00
am

www.promcoastfestival.org

Tom Chalko Guitar Recital

3:00 - 5:00 pm 

Rock 'n Roll Night

7:00 - 11:00 pm 

ay 17th

ay Day Fish Creek 10:00-4:00 pm

Rail Trail Story
Time

10:00 - 11:00am

Make a Wind
Chime

11:00 - 3:00pm

Bake off
1:30 - 3:30 pm

Information
Sessions

2:00 - 3:00pm

Makers Market

9:00 - 3:00pm

Gallery for a Day

10:00 - 4:00pm

Great Paper Plane Fly
Off

11:15 - 12:15pm

TROS walk
- Sparkes
Lookout
9:30 -
11:00am

Wildlife
Coast
Cruises
10:30am and
1:30pm

Gurney's

10:00-11:00am

Agnes Falls Open Day

10:00 - 4:00pm

Advanced booking required and cost applicable.

Refer to full program for details.



Friends of Agnes Falls Open Day

Discover, or Re-Discover this Beautiful Natural Attraction in our district! Members of the "Friends of Agnes Falls" will host an "Open Day" at the Agnes Falls Scenic Reserve. A sausage sizzle will be held, with refreshments and limited edition souvenirs on sale, as well as information and a fundraising raffle, with proceeds going towards further improvements in the grounds.

- o Sunday: 10:30-4:00, Agnes Falls Reserve



Gary Wallis, Cheryl Glowery & Mary Ellis Local History Talk

Local historian Cheryl Glowrey, botanist Mary Ellis and geographer Gary Wallis will form an expert panel to present an interactive discussion about the pre European history of the Prom Coast area. Their discussion will be based on the presenters' individual contributions to the book "Prom Country A History" published by Anchor Books. Cheryl will discuss Aboriginal history and land management of the local area. Mary will discuss the flora of the prom country including pre-history, Aboriginal history, botanical exploration, clearing the country, fire and flora reserves. Gary will discuss the geology and change in the local landscape. Copies of "Prom Country A History" will also be available to purchase at the event.

- o Saturday: 1:30pm – 3:00pm, Crawford Hall, Foster Museum



Jane Austen "Getting Dressed with Jane"

Have you ever wondered what Elizabeth Bennet wore under her dress? Or how Emma fastened her gown? Who made their clothes and what fabrics did they use? What is a high-stomacher? What is a bosom friend? Lise Rodgers has devised a repertoire of short, theatrical entertainments which will amuse and delight, plus leave you feeling just a little more familiar with the world of Jane Austen. Delve into the world of Georgian clothing and share Jane Austen's love of fashion by spending an hour or so – Getting Dressed with Jane, from the underwear to the outerwear and beyond!

The bar will be open. Limited spaces so visit www.trybooking.com.au to book or go to www.promcoastfestival.org.

- o Sunday: 1.00pm-3:00pm (rooms open at 12:00pm), Foster RSL Rooms, Main Street

Jennifer Timmins and Thea Rossen in Concert

"Two of Australia's finest young classical musicians, Jennifer Timmins, flautist spent seven weeks touring with Opera Australia performing Mozart's 'Marriage of Figaro' and is on the casual musicians' list for the Melbourne Symphony Orchestra, Orchestra Victoria, New Zealand Symphony Orchestra and Auckland Philharmonia Orchestra. Thea Rossen has performed with a large range of international artists



and has been a casual member of the percussion sections in the Melbourne Symphony Orchestra, Western Australian Symphony Orchestra and Orchestra Victoria. She has presented works at the Perth and Melbourne International Arts Festivals"

- o Sunday: 5:00pm-7:00pm, St Joseph's Catholic Church, O'Connell Street, Foster

Meet the Cider Maker – Gurneys Cidery

Tour of orchard and production facilities.

- o Saturday and Sunday: 10:00 – 11:00am, 343 Fish Creek – Foster Road, Foster



Melbourne Ska Orchestra Presented by Lyrebirds Arts

The Melbourne Ska Orchestra is an orchestra with a difference. Comprising up to 36 members this juggernaut contains some of Australia's finest musicians and performers. Led and directed by the energetic and charismatic Nicky Bomba (John Butler Trio, Bomba, Bustamento), they are a force to be reckoned with and resonate with audiences worldwide – young and old.

- o Saturday: Doors open 7:00pm – late, Foster Memorial Hall, Tickets \$55, Advanced booking required via <http://lyrebirdartscouncil.com.au>

Prom Country Farmers Market

Held on the 3rd Saturday of every month in the picturesque Foster War Memorial Art Centre gardens, this market epitomises everything that's good about Foster and the surrounding district. It provides a marvellous meeting point for the whole community, and a quick trip for a dozen eggs, fresh baked bread and fish caught just hours ago becomes a social gathering that's abuzz with conversation.

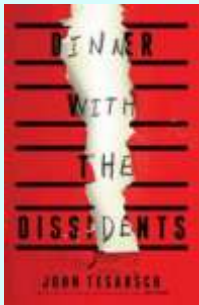
- o Saturday: 8:00 – 12:00pm, PJ Wilson Reserve, Foster

Spectrum – Presented by Sandy Point Music Club

Spectrum was formed in 1969 and today still features founder -member and principal songwriter Mike Rudd on vocals, guitar and blues harp. Drummer Peter 'Robbo' Robertson joined Mike and Bill in 1997 when they'd decided to resume the Spectrum name. Keyboardist Daryl Roberts joined a few years later, evoking the original organ -based Spectrum line-up. Broc O'Connor joined Spectrum after Rudd's long-term musical partner Bill Putt's unexpected death in 2013. Tickets \$30 on Trybooking .com. Bring own nibbles and drinks.

- o Friday: 7:30pm, Sandy Point Hall, Sandy Point

The Big Book Club



Book discussion with authors John Tesarsch and Christian White. Meet John, author of Dinner with the Dissidents, his third novel, and Christian White, debut author of The Nowhere Child. Come for afternoon tea and a panel discussion supervised by Jan Bull. Book via Trybooking.com. Please note this is an adult book discussion.

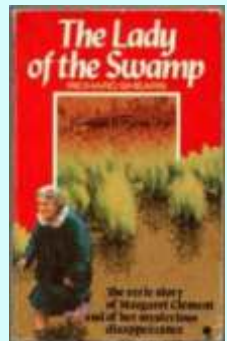
- o Saturday: 3:00pm – 4:30pm, Manna Gum Community House, 22 Station Road, Foster



'Lady of the Swamp' – Presented by Waratah Hills Vineyard

A musical narration. The L'Nane sisters, Patricia, Gay and Jacqui with accompaniment present the songs from Patricia's truly gripping musical theatre production about the disappearance of Margaret Clement, one of Victoria's intriguing mysteries. Margaret Clement was a wealthy Victorian heiress whose life fell into ruin. She finished her days living alone in a swamp on the banks of the Tarwin River in South Gippsland. She lived alone in her decaying mansion Tullaree surrounded by waist deep water. She became known as 'The Lady of the Swamp' after her mysterious disappearance. The show is based on this local story detailed in two books 'The Lady of the Swamp' and 'Swamp, who murdered Margaret Clement'. The production was shortlisted in the Pratt Prize for music theatre. Bookings essential. Cost \$50.00, Tickets: www.eventbrite.com.

- o Saturday: 7:00pm-9:00pm, Waratah Hills Cellar Door , 20 Cottmans Road, Fish Creek



Rock and Roll Night – Welshpool Hall

Head to the Welshpool Hall for a night of Rock and Roll. The evening will commence with basic rock and roll lessons and then you're invited to dance the night away to the music of DJ Martin Sullivan. Admission: \$10.00 Phone Joy: 0409 940 089.

- o Saturday: 7:00pm-11:00pm, Welshpool Hall, 49 Main St, Welshpool

Tom Chalko Guitar Concert



- Guitar Concert at Mt Best Hall

Songs, Arias, Cantilenas and Serenatas a musical journey through space and time. Mount Best resident Tom Chalko (classical guitar) and Tatiana Chalko (orchestra synthesizer) will play some of the most beautiful and memorable song compositions in the history of music. Performances will be accompanied by brief summaries of cultural and historic context of each composition.

Talk to artists and enjoy light refreshments after the performance. Cost: \$10 non-members, \$5 members. Contact/bookings: Tom at mountbest@gmail.com or SMS 0428121945.

- o Saturday: 3:00pm-5:00pm, Mount Best Community Hall, Mount Best.

Toora and District Family History Group Morning Tea

Toora Family History Group are offering morning tea and the chance to look up information about your family if they lived at any time in the district. You'll also have a special opportunity to talk with locals about the area and the families who have lived here since records were first kept. Don't miss out on the chance for a well catered morning tea.

- o Saturday: 10:00am-2:00pm, Toora Hall, Gray St, Toora.

Tidal River Open Space - TROS walk:

Sparkes Lookout walk. Fabulous morning tea to finish. Meet at Darby Saddle

- o Sunday 9:30am - 11:00am, Tidal River, Wilsons Promontory National Park



Wildlife Coast Cruises - Festival Cruise

Scenic short cruise departing Port Welshpool Jetty to view the beautiful areas



surrounding Port Welshpool and Wilsons Prom. Includes: 1 ½ hour cruise on board 'Brianna Lee', Complimentary tea, coffee and cake, view stunning remote coves, regular dolphin and seabird sightings. Adults \$40, Children \$20. Bookings required

www.wildlifecoastcruises.rezdy.com.

- o Sunday: Departing 10:30am and 1:30am, Port Welshpool Jetty.

Wiggy's on the Green 5-course degustation menu

Anthony Wignall (a.k.a Wiggy) has been a chef for over 17 years. He honed his skills at one of the best restaurants in Liverpool (his home city) before enjoying an exciting couple of years at the famous "Blue Mallard" in his home town. From there he moved to Gippsland where he loves working with all the amazing local produce at his fingertips. Creating dishes and designing menus with local seasonal produce, this is a chance to enjoy the best of our local produce expertly prepared.

Call 5682 2272 for bookings.

- o Saturday: 6:00pm-8:00pm, Foster Golf Club



THANK YOU TO OUR MAJOR SPONSORS

Proudly supported by the customers
of Toora & District **Community
Bank®** Branch & Foster branch



*South Gippsland
Shire Council*

Come for the beauty, stay for the lifestyle

